



PHONE

(850) 644- 9934

EMAIL

[musiccamps@fsu.edu](mailto:musiccamps@fsu.edu)

ADDRESS

PO Box 3061180, 122 N. Copeland Street, Tallahassee, FL 32306-1180

# FSU SMC 2023 Handbook

Choral Ensemble & Treble Choir Camp, Jazz Ensemble Camp,  
Piano Institute, Senior High Band Camp (S1 & S2),  
String Orchestra Camp (S1 & S2), Middle School Band Camp



PARENT & CAMPER HANDBOOK



# CONTENTS

HANDBOOK 2023

---

01	CAMP ESSENTIALS	PAGES 04-10
02	CAMP SCHEDULES	PAGES 11-15
03	INSTRUMENTS & MUSIC	PAGES 16-17
04	HEALTH & WELLNESS	PAGES 18-19
05	CHECK-IN DAY	PAGES 20-25
06	DAY CAMPER DETAILS	PAGES 26-27
07	NIGHT CAMPER DETAILS	PAGES 28-30
08	NIGHT CAMPER PACKING LIST	PAGE 31
09	ALL CAMPER PACKING/SUPPLY LIST	PAGE 32
10	PERFORMANCES	PAGE 33
11	CHECK-OUT & AFTER CAMP	PAGE 34

# WELCOME SUMMER 'NOLE!



## We can't wait for summer! How about you?

We are so glad that your family has chosen to join us for music camp this summer. We know that the process of getting ready for camp can seem overwhelming, but this handbook should answer many of your questions. We encourage parents to be active participants in camp preparation, and are glad that you are taking the time to read this handbook closely. We look forward to seeing you at camp!

There will be some information in this handbook which only applies to night campers, and some information which only applies to day campers, but our camp classes and activities are for ALL of our campers.

Please contact our office to discuss any questions or accommodations that may need to be made for your camper. FSU and the FSU Summer Music Camps are committed to providing a quality experience, and education to all qualified students. We do not discriminate on the basis of race, color, creed, national origin, gender, sexual orientation, or disability.

# CAMP ESSENTIALS

## Dates & Times Quick Reference

---

### CAMP DATES, CHECK-IN & PERFORMANCE TIMES

#### **Choral Ensemble & Treble Choir Camp: June 11 - 17, 2023**

Check-In on Sunday, June 11 from 1:00-3:00pm. Arrive at your designated arrival time\*

Honors Solo Recital - Thursday, June 15 at 7:00pm, Dohnanyi Recital Hall (*only selected campers perform*)

Small Ensembles Performance - Friday, June 16 at 7:00pm, Ruby Diamond Concert Hall

Choir Performance - Saturday, June 17 at 9:00am, Ruby Diamond Concert Hall

#### **Jazz Ensemble Camp: June 11 - 17, 2023**

Check-In on Sunday, June 11 from 1:00-3:00pm. Arrive at your designated arrival time\*

Combo Performance - Friday, June 16 at 7:00pm, Dohnanyi Recital Hall

Big Band Performance - Saturday, June 17 at 1:00pm, Ruby Diamond Concert Hall

#### **Piano Institute: June 18 - 24, 2023**

Check-In on Sunday, June 18 from 10:00am-2:00pm. Arrive at your designated arrival time\*

Final Recital - Saturday, June 24 at 10:00am, Longmire Recital Hall

#### **Senior High Band Camp Session 1: June 18 - 24, 2023**

Check-In on Sunday, June 18 from 10:00am-2:00pm. Arrive at your designated arrival time\*

Honors Solo Recital - Thursday, June 22 at 7:00pm, Dohnanyi Recital Hall (*only selected campers perform*)

Final Performance - Saturday, June 24 at 12:00pm, Ruby Diamond Concert Hall

#### **String Orchestra Camp Session 1: June 18 - 24, 2023**

Check-In on Sunday, June 18 from 10:00am-2:00pm. Arrive at your designated arrival time\*

Honors Solo Recital - Thursday, June 22 at 7:00pm, Dohnanyi Recital Hall (*only selected campers perform*)

Chamber Ensembles Performance - Friday, June 23 at 7:00pm, Ruby Diamond Concert Hall

Orchestra Performance - Saturday, June 24 at 9:00am, Ruby Diamond Concert Hall

#### **Senior High Band Camp Session 2: June 25 - July 1, 2023**

Check-In on Sunday, June 25 from 10:00am-2:00pm. Arrive at your designated arrival time\*

Honors Solo Recital - Thursday, June 29 at 7:00pm, Dohnanyi Recital Hall (*only selected campers perform*)

Final Performance - Saturday, July 1 at 12:00pm, Ruby Diamond Concert Hall

#### **String Orchestra Camp Session 2: June 25 - July 1, 2023**

Check-In on Sunday, June 25 from 10:00am-2:00pm. Arrive at your designated arrival time\*

Honors Solo Recital - Thursday, June 29 at 7:00pm, Dohnanyi Recital Hall (*only selected campers perform*)

Chamber Ensembles Performance - Friday, June 25 at 7:00pm, Ruby Diamond Concert Hall

Orchestra Performance - Saturday, July 1 at 9:00am, Ruby Diamond Concert Hall

#### **Middle School Band Camp: July 2 - July 8, 2023**

Check-In on Sunday, July 2 from 10:00am-2:00pm. Arrive at your designated arrival time\*

Final Performance - Saturday, July 8 at 10:00am, Ruby Diamond Concert Hall

\*Your Designated Arrival Time was selected during registration, and can be found in your [online camp account](#).  
If you can not find it in your account, or you need to change it, please call us.

# CAMP ESSENTIALS

## Basics

### MEET OUR STAFF

**Dr. Steven Kelly, Camp Director**

Professor of Music Education,  
Florida State University

**Dr. Mark Belfast, Assistance Camp Director**

Associate Professor of Music Education  
Chair, School of Music,  
Southeastern University

**Dr. Ryan Scherber, Assistant Camp Director**

Assistant Professor of Music Education  
and Director of Bands,  
Case Western Reserve University

**Mrs. Kerry Smith, Administrative Director**

**Mr. Zachary Pecore, Counselor Supervisor**

**Ms. Gabriela Santos, Assistant Counselor Supervisor**

**Ms. Sarah Leaman, Day Counselor Supervisor**

**Ms. Cristina Jimenez, Asst. Day Counselor Supervisor**

**Ms. Alexea Morris, Lead Night Counselor**

#### DAY COUNSELORS

Sarah Burns  
Tyler Butler  
Nathan Caldwell  
Mathieu Fredrickson  
Tristan Goodrich  
Britt Gummerman  
Taylor Haworth  
Jillian Katz  
Gregory Lambert  
Maggie Merrell  
Chijioke Oparaji  
Isabella Pinilla  
Carly Robinett  
Jariel Santiago  
Oliver Schoonover  
Jalen Smalls  
DaSean Stokes  
Kye Turner

#### NIGHT COUNSELORS

Kylie Boschen  
Jodie Cheung  
Benji Diaz  
Ashley Hart  
Andrew Johnson  
Marshall Knapp  
Jennifer Lamont  
Nicholas Lohse  
Morgan Magnoni  
Morgan Meese  
Matthew Morejon  
Alexea Morris  
Halle Mynard  
Raegan O'Rourke  
Ezra Prather  
Jesse Rigsby  
Savannah Schleich  
Thomas Thai  
Connor Werner  
Reece Windjack

### YOUR CAMP ACCOUNT

Your online camp account is where you go to fill out your required camp forms, make payments, select add-on services, and more.

To access your online account, go to:

[https://campself.active.com/  
floridastateuniversitycollegeofmusic](https://campself.active.com/floridastateuniversitycollegeofmusic)

### COMING SOON - OUR NEW CAMP APP!!!!

We are excited to announce that we will be launching a brand new camp app! The app will be free and connected to your online camp account.

We will be using the app to send notifications, reminders, updates, changes, and to share general announcements.

We will also be using it as our primary photo sharing method. You will be able download photos of your camper, and share them with friends and family.

More information about downloading the app will be coming later this spring!

### CONTACT US

- **CAMP ADMINISTRATION OFFICE**  
850-644-9934  
Monday - Friday 8am-5pm
- **CAMP ADMINISTRATION EMAIL**  
[musiccamps@fsu.edu](mailto:musiccamps@fsu.edu)
- **ADMINISTRATION OFFICE**  
Housewright Music Building Room 236
- **SOUTHGATE DORM OFFICE**  
448-500-2503  
This number is not active until camp begins!



# CAMP ESSENTIALS

## Policies

### CAMPER EXPECTATIONS

Nothing is more important to us than the well-being of our campers. We are vigilant about emotional safety as well as physical safety, about creating a place where campers feel safe, supported in reaching their goals and accomplishing challenges, and where everyone can have fun. To this end, the FSU Summer Music Camps requires all campers and parents to read, agree to, and abide by the [\*\*Camper Conduct Contract\*\*](#).

### WAIVERS & FORMS

There are required forms for you to complete in your online account. Please fill these forms out as soon as possible, as they help us plan for your arrival and provide you with a great camp experience. Forms can be updated or edited at any time by calling or emailing our office.

During registration you were asked to sign two waivers: [\*\*Statement of Voluntary Consent\*\*](#) and [\*\*Financial Responsibility Agreement\*\*](#). PDF versions of these waivers can be accessed using the provided links.

### AUTHORIZED CHECK-OUT

Campers are only permitted to be signed out by parents, guardians, or approved adults over the age of 18 who are listed in the camper's online account as an authorized person. To check who is listed, or to add individuals, use the **"Manage Authorized Pickup"** button in your online camper account (circled below).

During the class day, campers can be signed-out from the Help Desk in the lobby of HMU. At all other times, campers can be signed-out from the Dorm Office on the second floor of Southgate. **All authorized individuals must show ID to sign a camper out.**

Campers who drive themselves to camp will be able to check out themselves out to drive home. If your camper is driving home at the end of camp in another camper's personal vehicle, please include the camper's name as an Authorized Pickup.

A screenshot of the ACTIVE Florida State University Summer Music Camps online account. The page shows account balance, contact information, and a list of registrants. The 'MANAGE AUTHORIZED PICKUP' button is circled in red.

### BALANCE PAYMENTS

All fees are due in full at the time of registration OR by May 26, 2023 if you enrolled in a monthly installment plan. For registrations created after May 26, fees are due in full at the time of registration. Please contact us if you are having difficulty making payments. Additional payment information can be found [\*\*online\*\*](#).

### CANCELLATION & REFUND POLICY

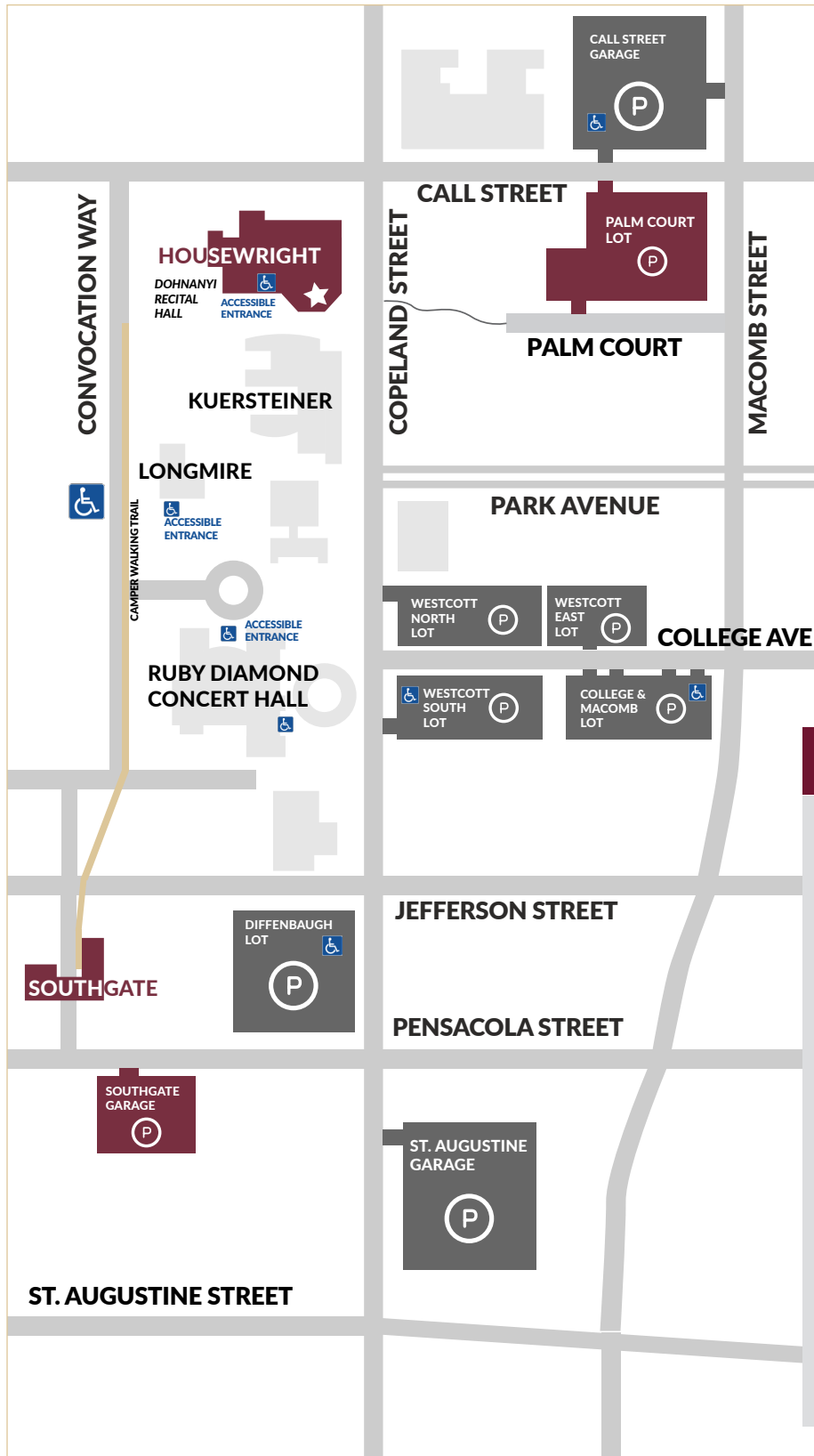
If a camper is unable to attend camp for any reason (except a positive COVID-19 test) AND camp administration receives a written refund request (via email to [musiccamps@fsu.edu](mailto:musiccamps@fsu.edu)), the following refund policy will apply:

- 10 or more BUSINESS DAYS (M-F; 8am-5pm) prior to camp check-in: If written notice of cancellation is received 10 or more business days prior to the start of camp you will be refunded tuition and housing payments LESS the \$100.00 non-refundable deposit.
- 1-9 BUSINESS DAYS (M-F; 8am-5pm) prior to camp check-in: If written notice of cancellation is received 1-9 business days prior to the start of camp, you will be refunded TUITION LESS THE \$100.00 non-refundable deposit. No housing refund is available at this point.
- As of 5:00pm on the last business night before camp check-in there are no refunds of any kind.
- Day Camper lunch plans, day camper dinner plans and parking passes are non-refundable

If a camper must go home during camp because they are ill, or if they are sent home because of camp rule violations or safety concerns, there are no refunds. Our full refund policy can be found [\*\*here\*\*](#).

# CAMP ESSENTIALS

Map



## LOCATIONS

Activities take place on the campus of Florida State University in Tallahassee, FL. Classes will be held in the Housewright Music Building, Kuersteiner Music Building, Longmire Building, Westcott Building and UKirk Building. Evening activities will take place on campus and off-campus; off-campus recreation activities are optional and transportation is via an accredited bus service.

Locations shown in **GARNET** on this map are check-in locations. Check-in details begin on [page 20](#).

Campers will be supervised on a walking "trail" (shown in **GOLD**) when they travel back and forth between the music buildings and the dorm.

# CAMP ESSENTIALS

## CAMPS A-Z

---

### ATM

There is a SunTrust ATM machine in the dorm, and a Bank Of America ATM located across from our music buildings.

### ATTENDANCE

Attendance at all camp events, rehearsals, and performances is mandatory for all campers. Attendance will be taken at the start of each class, every day.

If the camper is not feeling well and cannot attend class, our wellness policy will apply (see page 12).

If your child is a day camper and will be absent, please call our office at 850-644-9934 to let us know.

### CAMP STORE

A camp store will be set up in the dorm office to sell snacks, beverages, and commonly needed items such as toothpaste and feminine products. These are payable with cash only. There are also vending machines in the music buildings which accept credit and debit cards, or cash, for snacks and beverages.

### CELL PHONE POLICY

We allow cell phones at camp as long as they are used responsibly. Cell phones may be used during free time. All cell phones and other devices such as smart watches, music players, games, tablets, and other similar devices must be **TURNED OFF COMPLETELY** and **PUT AWAY OUT OF SIGHT** during all classes, rehearsals, and performances.

Campers may not take videos or photos during performances with their phone unless they have received prior approval from the Camp Director, Assistant Camp Director, or Dorm Supervisor prior to the event.

If a cell phone is turned on, visible, or being used during class, rehearsals, concerts/performances it may be confiscated according to the following policy by any member of the camp staff:

First Offense: The cell phone will be confiscated for the duration of the event/class/rehearsal/etc but will be returned at the end of the event

Second Offense: The cell phone will be confiscated for a period of 24 hours.

Third Offense: The cell phone or device will be

confiscated for the duration of camp. The item will be returned at camp check-out. If the cell phone is confiscated, parents will still be able to contact the camper through the Camp Office or the Southgate Campus Centre.

### COUNSELORS

**Day counselors** are with the campers while they attend classes during the day, and also participate in some of the evening recreation activities.

Day counselors are primarily undergraduate College of Music students and are a great resource for campers that want to know more about what it's like to be a student at FSU. Day Counselors are available to assist with anything the campers need; from forgotten items and finding classrooms, to pep-talks and snacks.

Day Counselors can be found at the Help Desk in the Housewright Music Building and at Satellite Help Desks throughout the other classroom buildings.

All day campers will have a day counselor assigned to them, and they will meet the counselor at check-in. If you are a day camper, please make sure you meet your counselor before you leave on check-in day.

Our **night counselors** reside in the dorm with the campers. They supervise the campers whenever they are at the dorm, and during all evening activities.

Night counselors are primarily upper-level undergraduate and graduate level FSU College of Music students, or FSU Alumni.

Each room will be assigned a specific night counselor. If at any time a camper needs assistance and their primary counselor is not available, there are always night counselors in the dorm office from 6am-11pm. After 11pm there is always an on-duty counselor available for late night emergencies.

### DRESS CODE

Dress for all camp activities is casual (shorts, t-shirts, jeans, etc) but should be appropriate for classroom instruction and for group recreation activities. Revealing clothing is not permitted, and it is at the discretion of the camp staff to require campers to change or cover-up if an outfit is deemed inappropriate. Concert attire is listed on page 29.



# CAMP ESSENTIALS

## CAMPS A-Z

---

### EXERCISE AND SPORTS

We sometimes offer recreation activities that include sports like kickball, volleyball, football, and basketball, but we cannot make accommodations for campers to workout or practice other sports while at camp. There is not enough time in the camper's schedule, and we do not have access to fitness or sports facilities. Campers are not permitted to go running by themselves.

### HOMESICKNESS

Most of our campers are so busy that they don't have time to think about home! We get far more calls from parents who are surprised that they haven't heard from their kids all week, than those that have homesick children. But homesickness is common at all summer camps, and it can affect first-time and seasoned campers. New places and new experiences can make some kids nervous, but our counselors and instructors have lots of ways to help your child engage, meet new friends, and ease homesickness. Campers are always welcome to call home, and if you believe that your child is experiencing homesickness you can always let us know so that we can ensure the counselor is aware. If homesickness is something you are concerned about, there is a lot of great information available on the Internet about preparing your child for camp. Here is one great [link](#).

### INTERNET & CLASSWORK

Students who need to do classwork for virtual school or other academic classes will be able to sign-up for work time as an evening activity on nights when there are not required rehearsals. Students will need to bring their own laptop or personal device, and Internet will be available in the camp office.

### LAUNDRY

The dorm has laundry facilities. The machines use a laundry card which can be purchased with a debit card or you can use quarters. At the time of publishing this handbook, the average cost of a load of laundry (washing & drying) is \$3.00. The camp store in the dorm office will sell laundry detergent and dryer sheets for \$2.00.

### LOCAL INFORMATION

Information about Tallahassee can be found at [visittallahassee.com](http://visittallahassee.com). There is a great digital guide with a hotel and restaurant directory, as well as business listings and local area maps.

### MAIL

If you are planning to send mail to a camper while they are at camp, we suggest you do the following:

- Send it before they leave.  
Our campus mail system slows the process down by as much as four days! We often receive cards and letters for campers long after their camp has ended. By sending mail the week before your camper leaves, we will be able to give it to them during the camp week. Any packages which need to be forwarded after camp has ended will be at the family's expense.
- Send it to this address:  
FSU Summer Music Camps  
Attn: Campers Name  
PO Box 3061180,  
122 N. Copeland Street, HMU 204,  
Tallahassee, FL 32306-1180
- Send it via FedEx or UPS: DON'T SHIP VIA US MAIL.  
If you are sending campers anything of value, we HIGHLY suggest sending it via FedEx or UPS. If you use the US Postal Service - even with a tracking number - you will find that once the package leaves the Tallahassee Post Office and enters the campus mail system, the tracking number will no longer work; it will seem like the package has been lost and even the Post Office will not be able to help you track it down. Only FedEx and UPS will enable you to track your package all the way through delivery.
- "Next Day Service" doesn't really mean next DAY on the FSU Campus. Mail and packages are only delivered to the College of Music once per day - usually at about 3:00pm. Even if you pay for AM delivery, expedited overnight service or priority delivery, it won't be delivered to our office until the late afternoon. It will then be given to the counselors who will get it to the camper at dinner time. Bottom line - if you send something on a Tuesday via overnight service, don't expect the camper to get it until Wednesday evening at the earliest.

### MONEY

Most of the items that campers spend money on are snacks, drinks, pizza delivery, and recreation activities. There will always be a free activity offered each evening. On some evenings, there will be optional recreation activities offered that have an additional fee, approximately \$10.00-\$20.00. These activities are payable in cash only, and will be paid on the day of the event.

# CAMP ESSENTIALS

## CAMPS A-Z

---

We encourage parents to make sure that campers have enough money before they leave. We typically recommend \$50.00 per week as a general rule. It is difficult for parents to get money to campers once they have left campus.

If you are concerned about your child carrying cash (there are no safes in the rooms) you might consider a pre-paid ATM card or a debit card that you can control from home. Pre-paid cards are available at Walmart and most convenience stores or grocery stores. Make sure that the card you select can be used as a debit and ATM card. There is a SunTrust ATM machine in the dorm and a Bank Of America ATM located across from our music buildings.

In the event that you need to send money to a camper after they are here, you will need to utilize the Western Union at the Publix on Ocala Road: PUBLIX #0782, 800 Ocala Rd, Ocala Corner Shopping Center, 850-575-3929. Whoever is receiving the transfer must be able to show ID - so if your child does not have ID they can not pick up a money transfer. You will need to work with your camper and their counselor to determine a time that they can go to receive the transfer.

### PRIVATE LESSONS

Private lessons are offered at Jazz Ensemble Camp, Senior High Band Camp, Middle School Band Camp, and String Orchestra Camp. (Lessons for Piano Institute are included and scheduled prior to check-in).

Sign-up takes place at camp check-in. Lessons cost \$50 per 50-minute lesson. Lessons payments are made to the TEACHER, not to the camp, and are payable with cash or check only.

The lesson(s) will take place during lunch or during a rehearsal; no lessons are scheduled outside of the 8am-5pm class day. Teachers are assigned based on availability when you sign-up at check-in. Campers may sign up for a maximum of 2 lessons per week.

On the day of your lesson(s) you will meet your instructor at the Help Desk in HMU and sign-in on the sheet at the desk.

Absence policy: If you are absent to a scheduled lesson, we will give you one opportunity to reschedule, if your instructor has times available for make-ups. If the instructor does not have an available make-up time, the

instructor must still be paid for the missed lesson. If your instructor is able to reschedule, and if you are absent again, the instructor will still be paid for the missed lesson. Signing up for lessons implies understanding of the absence policy.

### T-SHIRTS

Camp t-shirts will be on sale at check-in and at most concerts. The t-shirts are \$20.00 and can be purchased using cash, check or credit card. Proceeds from these t-shirts go to the FSU collegiate chapter of the National Association for Music Education (CNAfME).

### VISITORS

Campers may visit with friends, day-campers, and relatives who are not music campers in the lobby and dorm office at Southgate during the evening hours before curfew. Guests must register at the camp office and are subject to the Rules of Camp. For the safety of all campers, the camp staff reserves the right to deny visitation between campers and non-camp guests.

### VISITING FSU

If you are interested in an official tour of the FSU Campus, or meeting with FSU Admissions officer, please visit <https://visit.fsu.edu>. Most campers will have an opportunity to take an "unofficial" campus tour with our counselors if they choose. Our College of Music Admissions Director will visit a camp class to answer any questions.

# CAMP SCHEDULES

APPLIES TO ALL CAMPERS

---

## SCHEDULES

### CLASS SCHEDULE

Campers will follow a personalized class schedule from 8am-5pm each day.

Night campers are given their individual class schedule by their counselor on Sunday evening.

Day campers pick up their individual schedule from the Help Desk on Monday morning. Day campers should arrive between 7:30-7:45 on Monday morning to pick up their schedule and find their first classroom.

### PERFORMANCE SCHEDULE

All performance times are listed on [Page 4](#) of this handbook, as well as online. Information about attending performances is on [page 34](#). Performance and dress rehearsal drop-off times for day campers will be distributed during camp.

### EVENING ACTIVITIES

Tentative evening schedules can be found on the next four pages. **ALL ACTIVITIES LISTED ARE SUBJECT TO CHANGE.**

A final evening schedule will be distributed two weeks before the start your camp. Day campers are welcome, and encouraged, to participate in any and all evening activities. If they need assistance with coordinating or paying for evening activities they should see their assigned counselor. The process for requesting activities is highlighted below. Campers will go over their evening schedule with counselors when they arrive at camp.

### ACTIVITY LOCATIONS

Activities take place on the campus of Florida State University in Tallahassee, FL. Classes will be held in the Housewright Music Building, Kuersteiner Music Building, Longmire Building, Westcott Building and UKirk Building. Evening activities will take place on campus and off-campus; off-campus recreation activities are optional and transportation is via an accredited bus service. All activities are supervised by our staff.

## REQUESTING EVENING ACTIVITIES

When activities have been finalized, you will be notified (via email) that a new form has been added to your [online account](#). This form will ask your preferences for evening activities on the nights when there are multiple choices. This form will help us try to assign all campers the activities that they want, but we cannot always guarantee it. Some activities have participant limits set by the venue, or we are limited by the number of practice rooms, room capacity, etc...

Activities will be assigned based on the date that your preference form is submitted. After the deadline there will be no changes until after camp starts. After camp begins, campers will go over their selected evening schedule with counselors and have an opportunity to request changes.

You will be notified by email when the form is available.

## THEME DAYS

Catch the spirit! We hope you will participate in our theme days, and dress to impress!

These theme days apply to all weeks:

- Every Monday - no theme
- Every Tuesday - Tie-Dye Tuesday
- Every Wednesday - Wacky Sock Wednesday
- Every Thursday - School Pride Day
- Every Friday - FSU Friday

Week 4 only -

- Tuesday, July 4th - Red, White & Blue

# CAMP SCHEDULES

## EVENING SCHEDULE WK 1

TENTATIVE EVENING SCHEDULE JUNE 11-17, 2023

**ALL ACTIVITIES AND PRICES LISTED ARE SUBJECT TO CHANGE.**

DATE	CAMP	EVENING ACTIVITIES 7:00-9:00pm
Sunday, June 11	Jazz Ensemble Camp	Orientation
	Choral Ensemble & Treble Choir	
Monday, June 12	Jazz Ensemble Camp	Faculty/Staff Concert
	Choral Ensemble (SATB)	Rehearsals
	Treble Choir (SSAA)	Paint-a-Pot (\$10), on-campus movie, or virtual school work time
Tuesday, June 13	Jazz Ensemble Camp	Roller skating (\$12), jam sessions and practice time, on-campus movie, or virtual school work time
	Choral Ensemble & Treble Choir	Rehearsals
Wednesday, June 14	Jazz Ensemble Camp	Faculty/Staff Concert, virtual school work time
	Choral Ensemble & Treble Choir	Funstation (\$15), campus tour, on-campus movie, or virtual school work time
Thursday, June 15	Jazz Ensemble Camp	IMax (\$12), campus tour, on-campus movie, or virtual school work time
	Choral Ensemble & Treble Choir	Honors Solo Recital (7:00pm, DRH, <i>(selected campers perform, all others attend)</i> ), virtual school work time
Friday, June 16	Jazz Ensemble Camp	Combos Concert (7:00pm, DRH)
	Choral Ensemble & Treble Choir	Ensemble Concert (7:00pm, RDCH)

## Activity Descriptions For Week 1

**Campus Tour (Free):** Take a tour of the FSU campus with the best FSU tour guides - our counselors!

**Funstation (\$15):** The **Funstation** is filled with games and activities; from mini-golf and go-karts, to arcade games and laser tag. Our group package includes 1 Activity (Go-Karts\*\*, Mini-Golf, Laser Tag, and Batting Cages,) and a \$5 Fun Card. Snack bar will be open, and campers may purchase additional credits on their fun card.

**IMax (\$12):** See the summer's latest blockbuster on Tallahassee's biggest screen at the **Challenger Learning Center**. The movie title will be announced as soon as it is available.

**On-Campus Movie (Free):** Sometimes you just want to chill. Our counselors will select a movie, and campers can kick back and relax.

**Paint-A-Pot (\$10):** Paint-A-Pot is a fun experience for all artistic abilities. Choose from a variety of pre-made ceramic pieces, paint your piece, and they'll glaze and fire it. Campers will get to take their piece home as a great memento!

**Roller Skating (\$12):** Get ready for fun night of skating with your friends at **SkateWorld!** You can even learn to skate with a free lesson! Skate rental and 2 hours of skating are included. The arcade and snack bar will also be open, but is not included in the group price. (IT IS REQUIRED THAT YOU WEAR TALL SOCKS!)

**Virtual School Work Time:** If you are enrolled in an online summer class, you can use this time do to required classwork in the camp office. You will need to bring your own computer.

# CAMP SCHEDULE

## EVENING SCHEDULE WK 2

TENTATIVE EVENING SCHEDULE JUNE 18-24, 2023

**ALL ACTIVITIES AND PRICES LISTED ARE SUBJECT TO CHANGE.**

DATE	CAMP	EVENING ACTIVITIES 7:00-9:00pm
Sunday, June 18	Piano Institute Senior High Band Camp S1 String Orchestra Camp S1	Orientation
Monday, June 19	Piano Institute Senior High Band Camp S1 and String Orchestra Camp S1	Faculty/Staff Concert, practice time, virtual school work time
Tuesday, June 20	Piano Institute	Piano Faculty Recital
	Senior High Band Camp S1 and String Orchestra Camp S1	Roller Skating (\$12), Paint-A-Pot (\$8), campus tour, On-campus movies, practice time, virtual school work time
Wednesday, June 21	Piano Institute Senior High Band Camp S1 String Orchestra Camp S1	Dr. Dunnigan's Thursday Night Music Club, practice time, virtual school work time
Thursday, June 22	Piano Institute	Attend Honors Solo Recital, practice time, virtual school work time
	Senior High Band Camp S1 and String Orchestra Camp S1	Honors Solo Recital ( <i>selected campers perform, all others attend</i> ) practice time, virtual school work time
Friday, June 23	Piano Institute Senior High Band Camp S1	Attend Orchestra performance, practice time, virtual school work time
	String Orchestra Camp S1	Ensembles Performance (7:00pm, RDCH)

## Activity Descriptions For Week 2

**Campus Tour (Free):** Take a tour of the FSU campus with the best FSU tour guides - our counselors!

**Dr. Dunnigan's Thursday Night Music Club:** Thursday Night Music Club is a group of Tallahassee community musicians led by FSU's very own Dr. Patrick Dunnigan. The band plays a variety of repertoire including jazz, swing, funk, blues, rock, and Latin jazz arrangements for jazz ensemble. This is always an amazing concert!

**On-Campus Movie (Free):** Sometimes you just want to chill. Our counselors will select a movie, and campers can kick back and relax.

**Paint-A-Pot (\$10):** Paint-A-Pot is a fun experience for all artistic abilities. Choose from a variety of pre-made ceramic pieces, paint your piece, and they'll glaze and fire it. Campers will get to take their piece home as a great memento!

**Practice Time (Free):** Campers will have access to an individual practice room. Band and Orchestra rooms are limited to 30 students per evening; no limit for Piano Institute students..

**Roller Skating (\$12):** Get ready for fun night of skating with your friends at SkateWorld! You can even learn to skate with a free lesson! Skate rental and 2 hours of skating are included. The arcade and snack bar will also be open, but is not included in the group price. (IT IS REQUIRED THAT YOU WEAR TALL SOCKS!)

**Virtual School work time:** If you are enrolled in an online summer class, you can use this time do to required classwork. You will need to bring your own computer and wifi can be accessed in the dorm office.

# CAMP SCHEDULES

## EVENING SCHEDULE WK 3

TENTATIVE EVENING SCHEDULE JUNE 25-JULY 01, 2023

**ALL ACTIVITIES AND PRICES LISTED ARE SUBJECT TO CHANGE.**

DATE	CAMP	EVENING ACTIVITIES 7:00-9:00pm
Sunday, June 25	Senior High Band Camp S2 String Orchestra Camp S2	Orientation
Monday, June 26	Senior High Band Camp S2 String Orchestra Camp S2	Faculty/Staff Concert, practice time, virtual school work time
Tuesday, June 27	Senior High Band Camp S2 String Orchestra Camp S2	Funstation (\$15), Paint-A-Pot (\$8), campus tour, on-campus movies, practice time, virtual school work time
Wednesday, June 28	Senior High Band Camp S2 String Orchestra Camp S2	Dr. Dunnigan's Thursday Night Music Club, practice time, virtual school work time
Thursday, June 29	Senior High Band Camp S2 String Orchestra Camp S2	Honors Solo Recital ( <i>selected campers perform, all others attend</i> ), practice time, virtual school work time
Friday, June 30	Senior High Band Camp S2	Attend Orchestra performance, practice time, virtual school work time
	String Orchestra Camp S2	Ensembles Performance (7:00pm, RDCH)

## Activity Descriptions For Week 3

**Campus Tour (Free):** Take a tour of the FSU campus with the best FSU tour guides - our counselors!

**Dr. Dunnigan's Thursday Night Music Club:** Thursday Night Music Club is a group of Tallahassee community musicians led by FSU's very own Dr. Patrick Dunnigan. The band plays a variety of repertoire including jazz, swing, funk, blues, rock, and Latin jazz arrangements for jazz ensemble. This is always an amazing concert!

**On-Campus Movie (Free):** Sometimes you just want to chill. Our counselors will select a movie, and campers can kick back and relax.

**Paint-A-Pot (\$10):** Paint-A-Pot is a fun experience for all artistic abilities. Choose from a variety of pre-made ceramic pieces, paint your piece, and they'll glaze and fire it. Campers will get to take their piece home as a great memento!

**Practice Time (Free):** Campers will have access to an individual practice room. Limited to 30 students per evening.

**Funstation (\$15):** The Funstation is filled with games and activities; from mini-golf and go-karts, to arcade games and laser tag. Our group package includes 1 Activity (Go-Karts\*\*, Mini-Golf, Laser Tag, and Batting Cages,) and a \$5 Fun Card. Snack bar will be open, and campers may purchase additional credits on their fun card.

**Virtual School work time:** If you are enrolled in an online summer class, you can use this time do to required classwork. You will need to bring your own computer and wifi can be accessed in the dorm office.



# CAMP SCHEDULES

## EVENING SCHEDULE WK 4

TENTATIVE EVENING SCHEDULE JULY 2 - JULY 8, 2023

**ALL ACTIVITIES AND PRICES LISTED ARE SUBJECT TO CHANGE.**

DATE	CAMP	EVENING ACTIVITIES 7:00-9:00pm
Sunday, July 02	Middle School Band Camp	Orientation
Monday, July 03	Middle School Band Camp	Faculty/Staff Concert
Tuesday, July 04	YES! THERE IS CAMP ON JULY 4!!! Theme Day Attire is Red, White & Blue! 	
	Middle School Band Camp	IMax (\$10), practice time, on-campus movie, virtual school work time
Wednesday, July 05	Middle School Band Camp	SkateWorld (\$12), practice time, on-campus movie, virtual school work time
Thursday, July 06	Middle School Band Camp	TBA, practice time, on-campus movie, virtual school work time
Friday, July 07	Middle School Band Camp	Fun Station (\$12), Bowling (TBA), practice time, Game on Green

## Activity Descriptions For Week 4

**Bowling (TBA):** A fun night of bowling on-campus at [Crenshaw Lanes in the Student Union](#).

**Funstation (\$15):** The [Funstation](#) is filled with games and activities; from mini-golf and go-karts, to arcade games and laser tag. Our group package includes 1 Activity (Go-Karts\*\*, Mini-Golf, Laser Tag, and Batting Cages,) and a \$5 Fun Card. Snack bar will be open, and campers may purchase additional credits on their fun card.

**IMax (\$12):** See the summer's latest blockbuster on Tallahassee's biggest screen at the [Challenger Learning Center](#). The movie title will be announced as soon as it is available.

**On-Campus Movie (Free):** Sometimes you just want to chill. Our counselors will select a movie, and campers can kick back and relax.

**Practice Time (Free):** Campers will have access to an individual practice room. Band and Orchestra rooms are limited to 30 students per evening; no limit for Piano Institute students..

**Roller Skating (\$12):** Bring tall socks and get ready for fun night of skating with your friends at [SkateWorld!](#) You can even learn to skate with a free lesson! Skate rental and 2 hours of skating are included. The arcade and snack bar will also be open, but is not included in the group price.

**Virtual School work time:** If you are enrolled in an online summer class, you can use this time do to required classwork. You will need to bring your own computer and wifi can be accessed in the dorm office.

# INSTRUMENT & MUSIC

APPLIES TO ALL CAMPERS

## INSTRUMENTS

All campers need to bring their instrument; exceptions are listed to the right. FSU does not have any instruments available for camper use. If you do not own your instrument, we suggest contacting your school music director and arrange to use a school instrument during your camp. If you have extenuating circumstances which may prevent you from bringing your instrument to camp, please contact the camp office.

## INSTRUMENT REPAIRS

Please make sure that your camper's instrument is in good working order prior to coming to camp. If an instrument is not playable, or if an instrument becomes unplayable during camp, parents will be contacted about repairs.

Repairs will not be made to any instrument without the written consent of the parent, and all costs for instrument repair are the parent's responsibility. We utilize MusicMasters in Tallahassee for all repairs.

If an instrument is not playable, not repairable, or if the family does not wish to have repairs done in Tallahassee, we will do our best to locate a loaner instrument. In these cases we cannot guarantee that anything will be available, or guarantee what condition the loaner instrument will be in. We may suggest parents rent an instrument for the remainder of camp.

## INSTRUMENT CARE

You will be using your instrument all day in a campus setting, which means that you will be carrying (or rolling) it between classrooms and buildings, up and down hills and stairs, in hallways, on sidewalks, and backstage. Depending on your schedule, some classrooms may require walking to another building that is pretty far away. Elevators are not usually available.

Now is a great time to think about how you can most easily transport your instrument (we're looking at you Tuba and Double Bass!) There may also be times that you have to store your instrument in a public (locked and secure) place. Please consider using a hard sided case whenever possible.

## INSTRUMENT EXCEPTIONS

Percussionists at all Band Camps  
(Middle School and Senior High S1 & S2)

- Bring sticks & mallets (timpani & marimba), stick bag, and practice pads (if you have them)

Drummers at Jazz Ensemble Camp

- A 4-5 piece drum kit - snare drum, 1-2 rack toms, floor tom, cymbals (ride, crash and hi-hat), and hardware (hi-hat stand, cymbal stand(s), drum throne, bass drum pedal)
- Drumsticks and brushes

Electric Bass at Jazz Ensemble Camp  
Electric Guitar at Jazz Ensemble Camp

- In addition to your instrument, you should bring an amp, cables, and an extension cord

Double Bass Jazz Ensemble Camp & Orchestra Camp

- Bring a bar stool and label it with your name
- Jazz Ensemble (optional) : If you plan to play with a pick-up you should also bring an amp, cables, and an extension cord.

Pianists at Jazz Ensemble Camp & Piano Institute

- A pair of headphones with a 1/4" stereo jack. You can adapters online at amazon and monoprice.com
- A metronome

**EVERYONE ELSE NEEDS TO BRING THEIR INSTRUMENT**

## SECONDARY INSTRUMENTS

Do you play piccolo? Eb clarinet? How about English horn or alto clarinet? If you play a secondary instrument and want to bring it to camp, please do so. You will still audition on your primary instrument, and play your primary instrument in your ensemble. But if the music that your band or orchestra is playing requires additional instrumentation, you will be able to let your conductor know that you are interested and have your instrument with you!

# INSTRUMENT & MUSIC

APPLIES TO ALL CAMPERS

## LOCKERS & STORAGE

Campers who play small instruments will store their instrument in their dorm room and transport it with them to their classes.

Campers who play medium sized instruments will be assigned a locker. The locker number and combination will be printed on your name tag which you will receive at check-in.

Campers who play large or oversized instruments will be provided with a secure room to lock up their instruments. These students will be directed to the storage location during check-in.

Jazz drum sets can be unloaded after placement auditions (we provide one for that), and stored in a secure location until Sunday evening. Then they will be moved (with the help of the drummers) to a combo or rehearsal room.

Day campers should bring their instrument from home each morning and back home each evening.

## MUSIC FOR CHORAL ENSEMBLE AND TREBLE CHOIR CAMP

Campers at the Choral Ensemble Camp and Treble Choir Camp are required to purchase music for their choirs before camp begins. Campers will be able to purchase this online from Beethoven & Company. The price of the packet is TBA; we will know the price by the end of May and will send out an email and push notification as soon as we know. There will be instructions provided at that time.

Each camper must have their own copy - no sharing. The packets will be handed out at check-in upon your arrival.

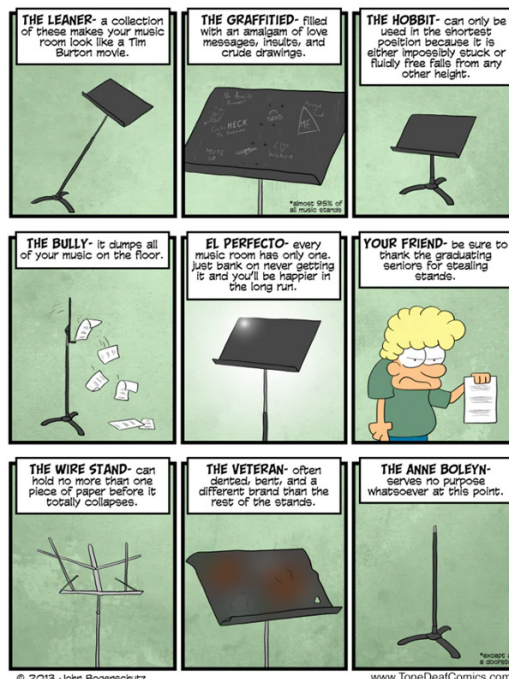
## OTHER MUSIC ITEMS TO BRING

- ☐ A MUSIC STAND: (everyone except vocalists and pianists) A foldable, compact one is best as you will be carrying this from class to class, and building to building.

*Why do you have to bring this?* Many of your classes won't be in a performance hall, they will be in regular classrooms where there aren't any music stands. Campers without music stands may be able to pick one out of our lost and found bin, but there is no telling what you'll get and there are no guarantees that there will be any available. →

- ☐ MUSIC:  
Audition music for placement auditions or optional auditions
- ☐ INSTRUMENT ACCESSORIES:  
Bring rosin, rock stops, cleaning cloths, valve oil, reeds, extra strings, etc.
- ☐ EAR PLUGS (optional): Some campers have found that having a pair of ear plugs available can be very helpful during long rehearsal days.

## The Different Types of Music Stands



# HEALTH & WELLNESS

## APPLIES TO ALL CAMPERS

The health and safety of our music camp community is our top priority. In order to protect all of our campers, counselors, instructors, and staff, the following is our protocol for managing any illness that presents at camp:

- If a night camper has a fever: The camper will be brought to sick bay. The camper's parents/guardians will be contacted, and they must take the camper home immediately. We can keep the camper isolated until the parent/guardian is able to travel to Tallahassee to take the camper home, however, **parents must be prepared to collect the camper within 24 hours.** If a camper must be sent home due to illness, there are no refunds.
- If a night camper feels unwell, but does not have a fever: The camper will be given time to rest in sick bay. The camper's parents/guardians will be contacted. Parents can choose to either come and get the camper, or allow the camper to remain in sick bay and monitored for up to 24 hours. If during the 24 hours symptoms do not improve, symptoms worsen, or if the camper develops a fever, then the camper must go home. If after 24 hours the camper feels better with rest, symptoms are completely gone, and there is no fever, the camper will be allowed to return to normal camp activities.
- If a day camper has a fever: Do not send them to camp. Please call our office to notify us that they will be absent. They must be fever-free (without the aid of medication) for 24 hours before they can return to camp activities.
- If a day camper feels unwell, but does not have a fever: Do not send them to camp that day. Please call our office to notify us that they will be absent. If they feel better with rest, their symptoms are completely gone, and there is no fever, the camper will be allowed to return to normal camp activities the next day.

### HOW ARE YOU FEELING TODAY?

As a daily self check-in, campers should ask themselves:

1. In the past 24 hours, have I felt sick, feverish, or unwell?
2. Have I had any of the following new symptoms?
  - fever
  - cough
  - sore throat
  - shortness of breath or trouble breathing
  - headache
  - body ache
  - loss of taste or smell
  - runny nose, stuffy nose, sneezing unrelated to allergies
3. Do I have a runny nose, stuffy nose or sneezing that is getting worse?

- ☒ If the camper answered NO to all of the above, great!
- ☒ If the camper answered YES to anything, do NOT go to class.  
Let a counselor know immediately.  
If they are a day camper, keep them home.

### GENERAL MEDICAL CARE

There may be times that campers have a medical concern which has nothing to do with feeling unwell.

In these cases, campers age 13 and over who experience health problems while at camp will be treated at the FSU Wellness Center (9am-4pm) or at Patients First, a group of local urgent care facilities. All campers age 12 and under will be treated at Patients First. 911, The Tallahassee Memorial Hospital, or Capital Regional Medical Center will be utilized for all emergency situations.

The FSU Summer Music Camps does not have a nurse on staff and employees of the Summer Music Camps are not responsible for making health decisions on behalf of the campers. All medical care will be given by a health professional at one of the facilities listed above.

# HEALTH & WELLNESS

APPLIES TO ALL CAMPERS

## MEDICAL FORM

There is a required medical form in your online account which needs to be completed prior to camp. Please fill this form out completely and accurately. It is our main source of information if there is a medical emergency for the camper. We do not require vaccination records or a physical.

## INSURANCE

Any and all costs which may be incurred for medical care during the course of the camp will be the family's responsibility.

For camper's with insurance, a copy of the camper's medical insurance card is required. It is the family's responsibility to provide us with any updates and/or changes to this insurance information before or during Camp so that any insurance claims are billed properly.

If you do not have insurance, or can not provide a copy of the medical insurance card, please call our office so that we can mark your insurance card form online as complete.

## GET READY TO WALK!

Campers will do **A LOT of walking**. You will walk back and forth on the "trail" several times per day. You will change classes and have to go to other buildings that may be far apart. So much walking, all day, every day.

Please prepare yourself for this by:

- WEARING COMFORTABLE SHOES.
- Dressing in layers! It will be hot - really hot - outside but cold inside.
- Bringing an umbrella.
- Brining some band-aids or moleskin in case you get blisters.

Flip flops may seem like comfortable summer footwear, but they can be dangerous when the sidewalks and stairs are wet. Which they will be when it rains every afternoon at 5 just as you are trying to walk back to the dorm. We encourage you to bring footwear that won't land you in the hospital.

## MEDICATIONS

It is highly recommended that all night campers bring a supply of common medications to camp. Examples would be Tylenol, Advil, Motrin, Tums, cold medication, and the like. These would be in addition to any medications that the camper takes on a daily or routine basis. Please send your camper prepared.

We do NOT have a supply of medication to give to your child. The most common ailments at camp are headaches and stomachaches, so it is essential that you pack some medications for them just in case.

If you do not pack medication for your camper, they will be unable to access medication while at camp.

- Pharmacies do not sell over-the-counter medications to minors.
- Counselors are not permitted to purchase medications for your camper.
- Health care centers will not provide medications unless it is a prescription.

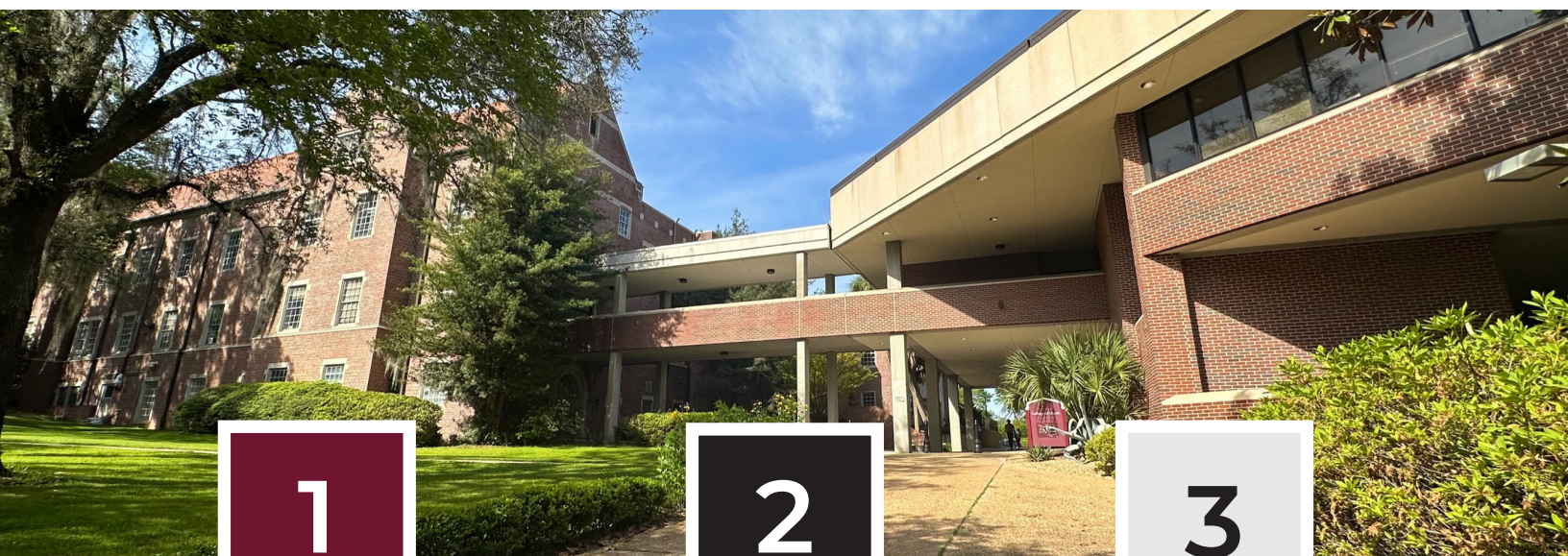
On the required Medical Form, which you can find in your [online account](#), you will be able to elect to have the camper keep medications in their room, or turn them into counselors.



# CHECK-IN DAY

LET THE FUN BEGIN!

- All campers must attend check-in, including day campers.
- Wear comfortable, cool clothes, good walking shoes, and a smile.
- Look for staff in black polo shirts if you have questions. We're here to help!



1

## WHEN TO ARRIVE

You selected a time slot for arrival when you registered. Time slots help us minimize crowds, keep placement auditions moving, and make the process faster for you!

If you are not sure what time you picked, log into your online account and you will see it listed as a "Group Assignment". Or call us and we can look it up. If you need to change your arrival time, just give us a call.

Make sure you factor in meal times during the check-in day. It's not fun if you're hangry. See FAQ on page 23 for more about local food.

2

## WHERE TO GO

Check-in starts at the Housewright Music Building. The suggested parking lot is marked on the Camp Map on page 7. The parking lot is located at 555 Palm Court, Tallahassee, FL 32306.

Leave your luggage in your car. Just bring yourself, your instrument, your music stand, and music for your placement audition. (*See the packing list for more details*).

You'll might also need money for any optional purchases like a camp t-shirt.

3

## WHAT YOU'LL DO

You will start at our Welcome Station where you will pick-up your name tag. If any required forms, payments, or documents have not been submitted we will have you complete them at this time.

Then you will visit specialty stations that vary by camp (including Private Lesson sign-up).

You will warm-up and complete your Placement Audition and any optional auditions. More information about that on page [24-25](#).



# CHECK-IN DAY

LET THE FUN BEGIN!

- Make sure you go to the Housewright Music Building first, not the dorm
- Leave your luggage in the car until they very end after you have your room key.
- Check out our Frequently Asked Questions on page 23.



4

## WHAT'S NEXT

Day Campers can leave check-in when they have finished all stations and have completed any applicable auditions. Plan to return on Monday morning between 7:30-7:45 to pick up your schedule and go to your first class which starts at 8am.

Night Campers are ready to leave the music building once they have finished all stations and have completed any applicable auditions. Drive to the Southgate Campus Centre located at 675 West Jefferson St., Tallahassee, FL 32306.

5

## DORM CHECK-IN

When you arrive to the dorm **LEAVE YOUR BAGS IN YOUR CAR!** Only bring in yourself and any medications that you wish the dorm staff to administer.

Dorm staff will be waiting to check you in on the ground floor. Once you have received a room key, you are officially under the supervision of the camps.

**AFTER** you receive your room key, you will return to your car, get your bags, and head to your room.

6

## GETTING SETTLED

Use this time to get settled, and meet your new friends and counselors.

After receiving a room key, campers can only leave the dorm by being signed-out (in the Dorm Office on the 2nd floor or in the Southgate Lobby) by parents or authorized guardians. Parents are free to leave at any time.

Dinner is available starting at 5pm. All night campers must be in their rooms by 6:00pm and will be taken by their counselors to Orientation.



# CHECK-IN DAY

## TRAVEL & SERVICES

---

### DRIVING & PARKING

The address to use for the check-in location is: 122 North Copeland Street, Tallahassee, FL 32306

Traveling West on I-10 (from Jacksonville/I-75/I-95):

- Take exit 209A for US 90 W
- Continue west on US 90 W (aka Mahan/Tennessee Street)
- Turn left (south) onto Copeland Street
- The Housewright Music Building is located on right after Call St (traffic light) intersection

Traveling East on I-10 (from Panama City):

- Take exit 199 to US 27 S (Monroe St)
- Drive south on US 27/Monroe Street
- Make a right (going west) onto Tennessee Street
- Turn left (south) onto Copeland Street
- The Housewright Music Building is located on right after Call St (traffic light) intersection

You do not need a permit for check-in day. University Lots are available for parking all day Sunday without a permit. The address for the recommended parking lot for check-in is 555 Palm Court, Tallahassee, FL 32306.

### DRIVING YOURSELF TO CAMP?

Overnight campers who drive themselves to camp do NOT need to purchase a parking permit. Night students will receive a free parking permit for the Southgate Parking Garage where they may leave their car for the duration of camp. Students are not allowed to drive once they have checked-in, and will need to turn in their keys to the dorm staff upon arrival.

### SHUTTLE SERVICE

If you choose to send your camper to Tallahassee via plane or bus, you have the option to arrange for our staff to pick up your child. This service is intended for campers traveling by themselves.

Locations that we have service to and from:

- Tallahassee International Airport (TLH)
- Greyhound at 112 W Tennessee St
- Red Coach Bus Doak Campbell Stadium Stop

Detailed information about Shuttle Service can be found under the [Travel](#) section of our website. You can purchase this add-on services in your online camp account. If you have purchased shuttle service, we will be in contact with you to collect your travel details.

### AREA HOTELS

The [DoubleTree Hotel](#) has been our host hotel for the past thirteen years. The DoubleTree Hotel is conveniently located in downtown Tallahassee, and is just up the street from our College of Music Buildings.

2023 Rate: \$109.00/night

[Online Reservations Click Here](#)

For phone reservations call 877- 800-2652 and reference Group Code: FMC or mention FSU Music Camp

Information on other area hotels can be found at [visittallahassee.com](http://visittallahassee.com) and on the [Travel](#) section of our website.

# CHECK-IN DAY

## FREQUENTLY ASKED QUESTIONS

---

### How long will check-in last?

It depends on your camp. Some camps have placement auditions which must be completed before you can check-in at the dorm. You should allow at least two hours to check in, complete a placement audition, go to the dorm and get settled. It may take longer depending on how long the line is at your placement audition room.

### Do I need a parent with me at check in?

As long as you are paid in full and have completed all of the required camp forms, you do not need a parent to check you in. If you will not have a parent/guardian with you at check-in, be sure to come prepared with everything you need, such as money to sign up for private lessons, your placement audition music, and everything on the camp packing list! We suggest contacting the camp office two weeks prior to check-in to be sure everything is all set for your arrival without a parent/guardian.

### Can I drive myself to camp?

Yes. If you are a night camper driving yourself to camp you will check-in and then park your car at the Southgate Parking Garage where it will remain for the week. You do not need a parking permit. You can not drive your car once you are checked-in. You will be able to check yourself out and drive yourself home at the end of camp.

### Do I have to attend check-in every week if I'm coming to multiple sessions?

Yes. At each check in the camper will receive a new name tag and/or materials that pertain to that camp. If the camp has a placement audition, you will do a new placement audition each week.

If you are being checked out on Saturday at the end of the first camp, you will need to pick an arrival time slot for the second week and your family will check you back in for the second camp.

If you are staying overnight in the dorm during the night in-between (see [Staying for Multiple Sessions](#)), then you will be brought over on Sunday by the counselors with all of the other students that are staying over.

### What happens if we are accidentally running late to check-in?

If unexpected travel delays cause you to miss your check-in time, here is what to do:

- If check in is still open, then come to the Housewright Building as soon as you arrive
- If check-in has ended, go directly to the Southgate Campus Centre. Counselors will get you checked-in and you will do any missed placement audition on Monday morning.

Check-in ends at 3:00pm on June 11

Check in ends at 2:00pm on June 18, June 24, and July 2.

If you know in advance that you will miss check-in, please contact our office to notify us of your expected arrival time. We will give you instructions about where to go based on the time and day you will be arriving.

### What if I leave something important at home?

Once you are checked-in at the dorm, your parents (or an authorized sign-out person) can sign you out at the camp office and you can go run errands. We have a Target, CVS, Walmart, and other stores close by. You just need to be back by 6:00pm.

If you forgot something and can't leave to get it, we may have it available at the camp store in the dorm office. Ask your counselor.

If you forgot something essential and it can't be replaced in Tallahassee, you can have your family ship it to you via the instructions for MAIL under the Camps A-Z section. Use FedEx or UPS or you will not get it in time.

### Where can I eat on check-in day?

The first meal included under the dining plan is dinner. Please plan out your breakfast and lunch plans since check-in can be busy, and you want to make sure you eat! Dining option on-campus, on Sunday during the summer are non-existent so you will need to plan to get food off-campus. There are food options nearby on Tennessee Street, Monroe Street, and Appalachian Parkway.

# CHECK-IN DAY

## REQUIRED PLACEMENT AUDITIONS

Campers at the camps listed in the box below are required to perform a Placement Audition at check-in to determine large ensemble, small ensemble, and/or chair assignments. The goal of the placement audition is for instructors to hear where the camper is at in order to set the camper up for a great camp experience.

Our instructors want all campers to get the most out of their camp experience, and we stand behind the decisions they make. We encourage campers to prepare for the placement audition and then to trust the decisions of the FSU educators to place them in the appropriate classes & ensemble. Changes will NOT be made.

We are proud that our campers have the opportunity to play alongside other student musicians from throughout the 50 states and other countries. The students at our camps come from a variety of backgrounds and musical experiences, and therefore, the ensemble assignment and/or seating campers receive may not be what they are used to back home.

Audition room locations will be printed on your name tag and posted throughout the buildings. Depending on the camp, your particular instrument, and how many other people arrive at the same time, you might find that you can do your audition immediately or you may have to wait in line. Warm-up rooms will be available.

### PIANO INSTITUTE

There is no placement audition for Piano Institute, but we do need you to prepare music in advance. Students should prepare two classical pieces that are performance ready. These pieces should be memorized and should not exceed 6 minutes. Please bring the original sheet music with you. Works should be of standard classical repertoire (no rock, pop, musicals or film scores). This will be the music you will focus on in private lessons, and masterclasses, and will possibly be the music you perform at the final recital.

## WHAT TO PREPARE

When selecting pieces of music, our best advice is to select something that best showcases your talent. Pick pieces that you can play through with confidence, and that highlight your best skills.

### MIDDLE SCHOOL BAND CAMP & SENIOR HIGH BAND CAMPS SESSION 1 & 2

All instruments except percussion:

- Two scales of your choice
- Two solo excerpts, études or short pieces.  
(You can select two movements of the same piece)
  - One piece should be slower, lyrical
  - One piece should be faster and more technical

Percussion: Prepare one snare piece and one mallet piece

### STRING ORCHESTRA CAMPS SESSION 1 & 2

- Two scales of your choice
- One solo piece of your choice.  
(Technical, lyrical or both is fine).
- You may also be asked to sight read

### JAZZ ENSEMBLE CAMP

Woodwind and Brass Instruments

- Two major scales of your choice
- One piece of your choice

Drummers:

- Please be able to play a swing pattern  
(*You do not need to use your personal kit for this audition; one will be provided so you just need your drum sticks*).

Piano, Guitar & Bass (Electric & Upright):

- Please be able to play a 12 bar blues pattern

# CHECK-IN DAY

## OPTIONAL AUDITIONS

The camps listed below have optional auditions for Honors Opportunities. These auditions only take place during check-in. If you can not arrive during the regular check-in window, then you will not be able to audition for these opportunities.

### CHORAL

#### Honors Solo Recital

A maximum of 16 students at Choral Ensemble Camp will be selected to perform on Thursday evening in an Honors Solo Recital. Selected campers will be assigned to "Class Voice" as one of their electives. In this class they will work on their solo. They will also work with the faculty as one of the featured singers during the daily masterclass.

#### Chamber Choir

A limited number of students at Choral Ensemble Camp will be selected by audition to rehearse and sing in a Chamber Choir in addition to their regular choirs. These campers will be assigned to "Chamber Choir" as one of their daily electives.

Eligible singers can audition for one or both opportunities:

- All tenors and all basses may audition
- Sopranos and Altos who are currently in grades 10, 11, and 12 may audition.

### WHAT TO PREPARE

Prepare a classical solo of your choice. You can use the same piece for both auditions.

An accompanist will be provided; please bring original music.

If you are auditioning for the solo recital, the piece should be the piece that you want to sing at the recital, and use during masterclass.

### BAND & ORCHESTRA

#### Honors Solo Recital

The Honors Solo Recital is a special performance on Thursday evening at both sessions of the Senior High Band Camp and String Orchestra Camp. It will feature solo performances from selected students. All campers are eligible to audition.

The first round of auditions takes place at check-in. You will be notified if you are being asked to the second round of auditions.

### WHAT TO PREPARE

Prepare a solo of your choice. Only solos (with or without accompaniment) are acceptable. No ensembles, no trios, no duets.

Selected music must be a music Class A/Grade 5 or higher with a time limit of 6 minutes.

The piece you audition with must be the piece you perform at the recital.

An accompanist will be provided; please bring original music.

# DAY CAMP DETAILS

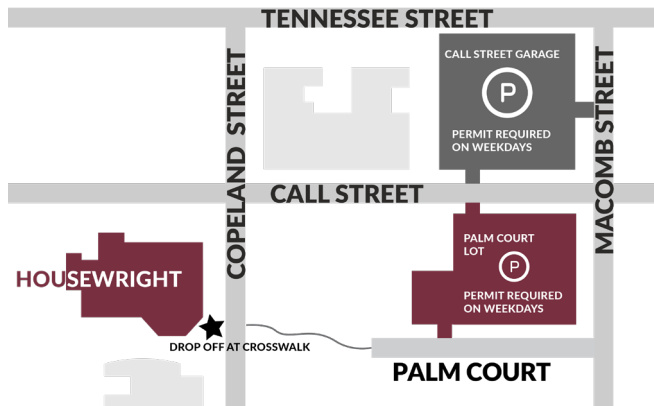
APPLIES TO DAY CAMPERS ONLY

Day Campers must be staying at home or in the Tallahassee area with a parent/guardian over the age of 21. Day campers are required to attend all rehearsals, performances, and classes. Please read the information about check-in on pages 16-19 and arrive during your designated time slot.

## 01 DROP-OFF, PICK-UP & PARKING

Daily drop-off on Monday - Friday begins at 7:30am at the crosswalk in front of the Housewright Music Building on Copeland Street. Classes will start promptly at 8:00am. On the first day, campers will need to stop at the Help Desk to get their class schedule, so they should plan to arrive by 7:45am.

Afternoon pick-up is at 5:00pm at the same location.



Day campers being dropped-off and picked-up do not need any kind of parking permit.

Day-campers driving themselves to camp each day should purchase an FSU camp parking permit. These are available to purchase in your online account and cost \$13.00 for a weekly pass. It will allow you to park in any ungated FSU Parking lot in faculty/staff/student spaces. The deadline to purchase a parking permit is MAY 30 for June camps, or JUNE 12 for July camps. Parking permits are non-refundable.

Drop-off instructions for performance will be sent out during the camp week. Campers should plan to arrive on campus in their performance attire with their instrument when they are dropped off for performances.

## 02 EVENING ACTIVITIES

Day campers are welcome, and encouraged, to participate in any and all evening activities. Please see the information on page 11 about signing up for evening activities.

### GOING TO AN EVENING ACTIVITY

If the event is on-campus, the camper can go directly to the event location at the start time.

If the event is off-campus and required bus transportation, the camper should arrive at the Southgate Campus Centre at the designated loading time and travel to the event with the group. For accountability purposes, parents may NOT drive day-campers directly to the camp event.

### LEAVING AN EVENING ACTIVITY

If the event is on-campus, parents should pick up the camper at the same location that they dropped the camper off. If the event has ended, and the camper has not been picked-up by the time that the night campers are turning to the dorm, the day camper will be brought back to the dorm with the group and will need to be picked up from the 2nd Floor Camp Office at the Southgate Campus Centre.

If the event was off-campus, parents should pick up the camper from the 2nd Floor Camp Office at the Southgate Campus Centre. No campers will be released from off-campus locations; for accountability purposes campers need to travel to and from the event with our staff.



# DAY CAMP DETAILS

APPLIES TO DAY CAMPERS ONLY

---

## 03 MEALS

Meals are not included for day campers. Day Campers can either bring lunch from home to eat in a designated area at the College of Music, or purchase a dining package to eat in the cafeteria. Food from home is not permitted to be brought into the cafeteria due to health regulations.

Lunch and dinner packages are available to purchase in your [online camp account](#).

- Lunch Package (\$33.00): includes 5 lunches to be used Monday – Friday.
- Dinner Package (\$33.00) includes 5 dinners to be used Monday – Friday.
- Lunch & Dinner Package (\$66.00) includes 10 meals (5 lunch / 5 dinners) to be used Monday – Friday.

Lunch and dinner packages are non-refundable once purchased. The deadline to purchase meal packages is the Wednesday before your camp check-in. The dining hall does not accept payment at the entrance to purchase meals. Your camp name tag will indicate that you have purchased a meal plan and allow you entry to the cafeteria.

After classes end at 5pm, day campers who purchase a dinner package would walk back over to the dorm with the other campers, and then need to stay in the cafeteria or in the lobby area of Southgate until evening activities begin. Day campers who eat at Southgate are NOT able to go up into the dorm area to visit with overnight campers.

If you indicated on your camp registration that your camper has **food allergies, religious requirements, or other dietary restrictions**, and you have purchased a meal plan, we will provide the specific information from your form to the dining hall director, Tara Bracken. Ms. Bracken is an employee of Sodexo, the company which manages the dining hall at the Southgate Campus Centre. She will be working with her staff and a registered dietitian to create a camp menu that meets your needs. She may reach out to you prior to the start of camp if additional information is needed, but if she has all of the information that she needs from your form, then you may not hear from her directly. If you have specific questions or concerns about your dining arrangements, you may reach out to her directly at: [tara.bracken@sodexo.com](mailto:tara.bracken@sodexo.com). Please be sure that any communication with her specifies the FSU Summer Music Camps and includes your child's name and the week they are attending camp.

YES! Day campers must attend check-in. Read the check-in info starting on page 20.

Check the supply list on page 33 to make sure that you bring the supplies you need each day.

# NIGHT CAMP DETAILS

APPLIES TO NIGHT CAMPERS ONLY

Being an overnight camper is a great way to experience the FSU Summer Music Camps. Please note that while most campers never have an issue at camp, **parents must be prepared to come to Tallahassee to get their camper immediately if their camper is ill or violates our camp rules.**

## 01 THE DORM

All campers stay in a privately-owned dorm called the Southgate Campus Centre located at 675 West Jefferson Street, Tallahassee, FL 32301. The building is staffed with a 24-hour security desk in the main lobby. Campers who drive themselves to camp do not need a parking permit - they can park at the Southgate Garage for free .

There is a camp office located on the 2nd floor of the dorm which is staffed by our counselors from 6am-11pm. After 11pm there will be an on-duty counselor available for late night emergencies.

A camp store will be set up in the dorm office to sell snacks, beverages, and commonly needed items such as toothpaste and feminine products. These are payable with cash only.

Campers will be walked to and from the dorm and activities by the counselors. Campers are not permitted to go anywhere on campus unaccompanied.



## STAYING FOR MULTIPLE SESSIONS

If you are joining us for more than one camp or session this summer, and the sessions are consecutive, you have two options:

- You can check-out from the first camp on Saturday after your performance and spend the night off-campus. You would return for check-in on Sunday during your selected time slot. You will work with your counselor during camp to find out if you will need to move rooms for the second camp, or if you will be able to leave your belongings in the dorm on Saturday night.

OR

- Book an extra night of housing and stay overnight in the dorm on Saturday night. Extra nights are \$50.00/night and include the extra housing, all extra meals, and supervision. Counselors will bring all campers who stayed over to check-in for the next camp on Sunday, so parents do not need to be present for check-in at the second camp. Typically students who stay over do not need to move rooms, but sometimes it is necessary depending on how the rooms are allocated during the second week.

Extra nights can be purchased in your [online camp account](#).

# NIGHT CAMP DETAILS

APPLIES TO NIGHT CAMPERS ONLY

Campers will get to meet their counselors and the camp staff throughout check-in day, and at camp Orientation on Sunday evening. Counselors will review all of the rules and procedures for the dorm with the campers on the first night.

## 02 DORM ROOMS

The dorm rooms are old-school, plain square rooms (not the fancy suite-style dorms).

Each room will house three (3) campers. There is no option to request a private room. Males are housed on the 2nd floor of the dorm. Females are housed on the 3rd floor of the dorm. The 4th floor may be utilized as well, and occasionally will be used as a mixed gender floor. In these cases males and females would be at opposite ends of the same floor. Rooms are assigned based on the gender that was selected on the camper's registration form.

Each dorm room is 220 sq. feet with its own bathroom, and will contain three beds, one wardrobe for storage, two sets of drawers for storage, two desks, one overhead ceiling light, a shower curtain and toilet paper. There is one window and one air conditioning unit in each room.

Beds are raised slightly off the ground for storage:

- Under Bed 1 there are 4 storage drawers
- Under Bed 2 there are 4 storage drawers
- Under Bed 3 is open space.

### WHAT YOU NEED TO BRING

A full packing list and frequently asked questions can be found on page 32. The wardrobe allows for hanging storage but you must bring hangers.

Even though the diagram shows the beds made, we DO NOT provide pillows, sheets or blankets.

You will not be able to adjust the air conditioning temperature - doing so results in too much moisture in the room. Most campers find the rooms to be cold, so bring a warm blanket.

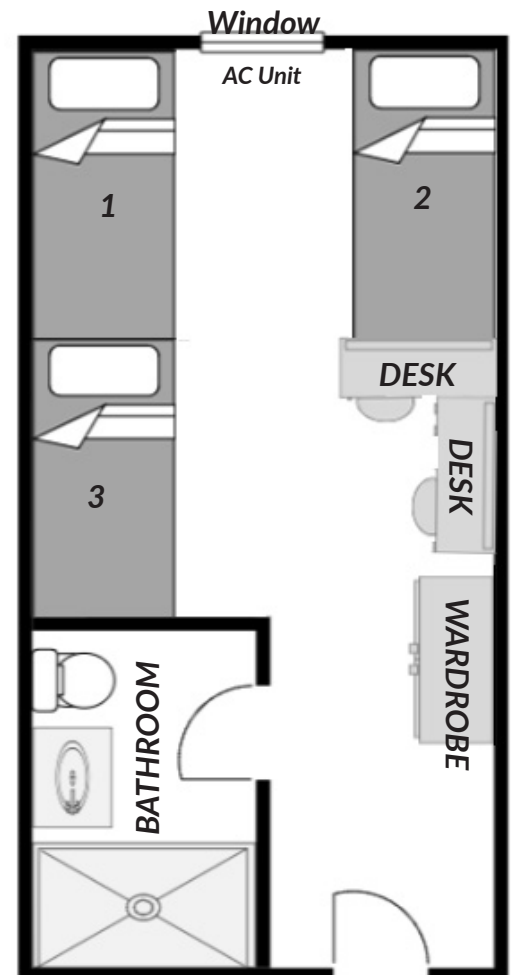
Please remember that the room is small and has to fit everyone's belongings. Please pack only what you need, and make sure to label all of your belongings.

### ROOM KEYS

Lost room keys should be reported right away to a counselor or dorm office. All keys must be returned at check-out. There is a \$25.00 fee for lost keys.

### CLEANING

The room will be cleaned prior to your arrival, but you and your roommates are responsible for keeping your room clean on a daily basis. That means picking up and throwing away your trash, and wiping down high touch surfaces. Please be considerate of your roommates and keep your area tidy.



# NIGHT CAMP DETAILS

APPLIES TO NIGHT CAMPERS ONLY

## 03 ROOMMATES

Room assignments are based on age. Unless you put in a roommate request, we will assign you with two roommates of the same age (+/- 1 year). Campers are able to request a roommate(s) if they wish. To request a roommate, use the Roommate Request Form in your [online account](#).

- You can room with campers that are attending a different camp as long as the camps check-in and check-out on the same days.
- All campers involved in the request must submit their own request form so that we see that everyone does want to room together. For example, if Sally, Julie, and Mary want to room together, each of them must submit a roommate request form with all three names on it.
- Males and females cannot request each other.
- Roommate assignments are NOT confirmed prior to camp. You will find out your room assignment and roommates at check-in. Every effort will be made to honor your request.

## 04 MEALS

The dining hall is located on the first floor of the Southgate Campus Centre. Three meals per day are included for overnight campers. The meal plan begins with dinner on Sunday. Your name tag is your meal admission, so if it is lost or damaged please see a counselor right away for a replacement.

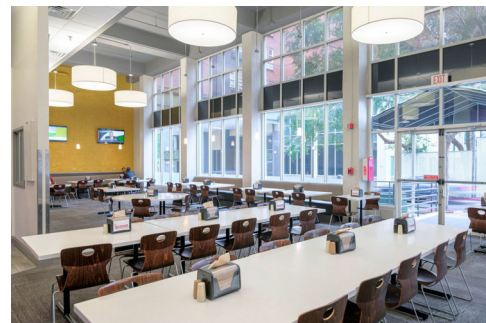
The dining hall is set up like a food court/buffet. It will always include a hot entree station and beverage station at all meals. During breakfast, cereals, bagels, English muffins are also available; during lunch and dinner a salad bar, and dessert station are added.

### DIETARY ACCOMMODATIONS

If you indicated on your camp registration that your campers has **food allergies, religious requirements, or other dietary restrictions**, we have provided the specific information from your form to the dining hall director, Tara Bracken. Ms. Bracken is an employee of Sodexo, the company which manages the dining hall at the Southgate Campus Centre. She will be working with her staff and a registered dietitian to create a camp menu that meets your needs. She may reach out to you prior to the start of camp if additional information is needed, but if she has all of the information that she needs from your form, then you may not hear from her directly. If you have specific questions or concerns about your dining arrangements, you may reach out to her directly at: [tara.bracken@sodexo.com](mailto:tara.bracken@sodexo.com). Please be sure that any communication with her specifies the FSU Summer Music Camps and includes your child's name and the week they are attending camp.

### DELIVERIES

Campers may have food or other items delivered to the dorm if they wish. Counselors will go over all dorm rules at Orientation, and will cover the times that food can be delivered. Campers are not permitted to go outside to meet delivery drivers - the driver must come into the dorm to deliver any food to campers.



# NIGHT CAMP PACKING

## NIGHT CAMPER PACKING

### DORM SUPPLIES

#### BEDDING & TOWELS

- ☐ Sheets (extra-long twin).
- ☐ Blanket
- ☐ Pillow / Pillowcase
- ☐ Bath towel
- ☐ Hand towel / Washcloth
- ☐ Pool Towel (to use outside to sit on; we don't go swimming)

#### TOILETRIES & PERSONAL ACCESSORIES

- ☐ Shampoo / Conditioner
- ☐ Body wash / Face wash
- ☐ Hand Soap
- ☐ Toothbrush
- ☐ Toothpaste
- ☐ Deodorant
- ☐ Makeup
- ☐ Makeup remover
- ☐ Contact Lenses
- ☐ Contact Lens solution
- ☐ Styling products
- ☐ Nail clippers / Tweezers
- ☐ Shaving supplies
- ☐ Hair brush
- ☐ Hair dryer / curling iron / flat iron
- ☐ Sunglasses

- ☐ Hat / Sun visor
- ☐ Belt

#### HEALTH CARE ITEMS

- ☐ Feminine products
- ☐ Hand Sanitizer
- ☐ Thermometer
- ☐ Band-aids
- ☐ Daily Medications
- ☐ As-Needed Medications
- ☐ Sunscreen

#### CLOTHING FOR EVERYDAY

- ☐ T-shirts
- ☐ Shorts
- ☐ Jeans / Pants
- ☐ Sweatshirt/Sweater/Jacket
- ☐ Pajamas
- ☐ Underwear
- ☐ Bras
- ☐ Undershirts
- ☐ Rain Jacket
- ☐ Sneakers / Tennis shoes
- ☐ Comfortable, closed-toe shoes
- ☐ Theme Day clothing/accessories (optional; see page 9).

#### ELECTRONICS & ROOM SUPPLIES

- ☐ Cell phone & Phone Charger
- ☐ Headphones
- ☐ Computer (if you will be doing classwork for a summer course)
- ☐ Hangers for your clothes
- ☐ Alarm Clock
- ☐ A lock on your luggage to secure your valuables
- ☐ Small lamp or reading light (there is only one light in the room and it is not bright. If you wish to read, write, etc. after the main light has been turned off, you will need to bring your own light).
- ☐ Laundry detergent / dryer sheets (if you plan to do laundry)
- ☐ Cleaning wipes

SEE PERFORMANCE CLOTHES & OTHER SUPPLIES ON NEXT PAGE

### FREQUENTLY ASKED QUESTIONS ABOUT PACKING:

#### Can I bring a fridge or microwave?

Yes, you are permitted to bring these items but please keep in mind that the rooms are VERY small. After you put three people with luggage and personal items into the room, there is very little space left for a fridge or microwave.

#### Can I bring food to have in the room?

Yes, you can bring food/snack items for your rooms. Please bring nut-free items that are individually packaged to avoid allergy problems. Rooms do not have refrigerators or microwaves, so anything you bring will need to be kept and eaten at room temperature. Outside food is not permitted in the dining hall due to health code regulations.

#### Can I bring a computer, TV, or gaming system?

Yes, but there is no wifi or cable in the room. These items are your responsibility. The camps are not responsible for damage, theft, or loss of any personal item.

#### What is the item that campers most wish they brought with them?

It's a tie between:

- A mattress pad
- A warm blanket (the rooms are very cold)
- A light (the rooms are very dark)

# SUPPLIES

FOR ALL CAMPERS

## GENERAL SUPPLIES

- ☐ Backpack
- ☐ Notebook
- ☐ Folder
- ☐ Pens, Pencils
- ☐ Refillable Water Bottle
- ☐ Umbrella
- ☐ Music Stand  
(Vocalists and pianists do not need one)  
A foldable, compact one is best as you will be carrying this from class to class, and building to building.
- ☐ Music  
audition music for placement auditions or optional auditions
- ☐ Instrument Accessories  
Bring rosin, rock stops, cleaning cloths, valve oil, reeds, extra strings, etc.
- ☐ Ear Plugs:  
Some campers have found that having a pair of ear plugs available can be very helpful during long rehearsal days.

## PERFORMANCE ATTIRE

All campers are required to wear one of the performance attire options listed to the right for their concerts. If your camp has multiple concerts, you may wish to bring more than one set of concert clothing.

### ADDITIONAL ATTIRE:

If you are in **Choral Ensemble and Treble Choir Camp**, you will need the following for the Friday night ensemble concert:

- Jeans
- A Garnet or Red color t-shirt  
(we love the camp t-shirt which you can buy at check in!).

If you are auditioning for any of the Honors Solo Recitals, you may wish to bring separate recital clothes (of your choice) for that performance.

### OPTION 1

- ☐ Black dress shirt (long sleeves)
- ☐ Black pants (no jeans)
- ☐ Black dress shoes
- ☐ Black socks/tights

### OPTION 2

- ☐ Black dress (below the knees or longer) with 3/4 length or longer sleeves
- ☐ Black dress shoes
- ☐ Black stockings/tights

### OPTION 3

- ☐ Black skirt (below the knees or longer)
- ☐ Black shirt with 3/4 length or longer sleeves
- ☐ Black dress shoes
- ☐ Black stocking/tights



# PERFORMANCES

## ABOUT PERFORMANCES

### TIME TO SHOW OFF THE HARD WORK!

We hope that the whole family will be joining us for the camper's performance. Performance times and locations are listed on the second page of this handbook, and can also be found online.

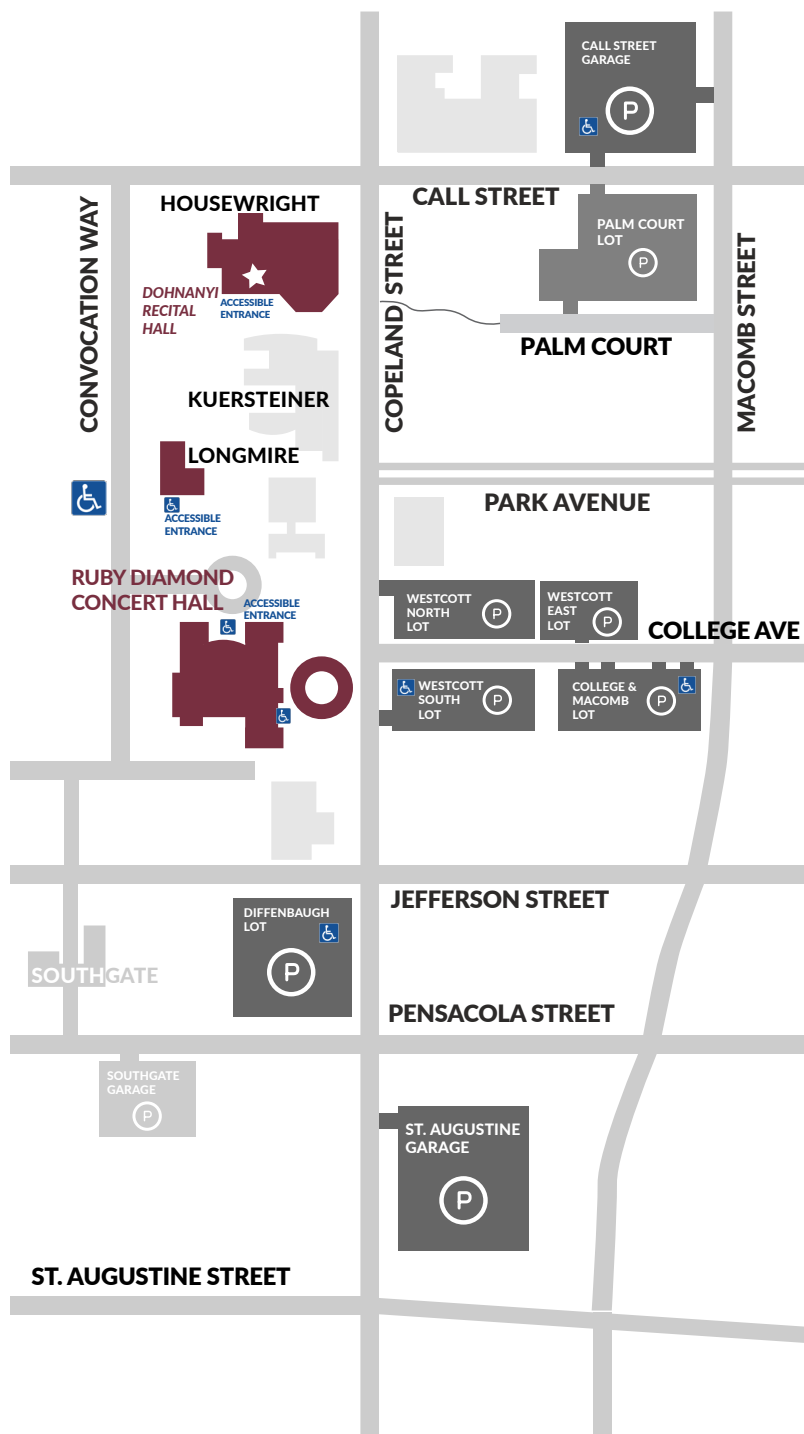
### CONCERT PARKING

Saturday concerts take place in Ruby Diamond Concert Hall (except Piano Institute which is in Longmire Recital Hall). You can park in any FSU Parking Lot without a permit for Saturday concerts.

Thursday and Friday performances take place in Ruby Diamond Concert Hall and Dohnanyi Recital Hall. Parking for these concerts will be in reserved parking lots. You will be sent a performance reminder with the parking locations via email and on the app 48 hours prior to the performance..

Guests with accessibility needs and/or limited mobility may be dropped off at Ruby Diamond's Accessible Entrance, which is located at the north entrance of the concert hall. The drop-off roundabout may be accessed via Convocation Way. This is for drop off only, Ushers will help direct patrons to the elevators.

- All performances are free; no tickets needed.
- Seating is general admission. All concert halls open 30 minutes prior to the start of the performance. To arrange reserved seating for guests with accessibility needs and/or limited mobility, please contact our office.
- No food or drink allowed.
- No pets allowed except certified service animals.
- Personal, non-flash photography/video is allowed but please be respectful of the performers, conductors, and other audience members. Parents may videotape for personal use, but FSU does not approve for these videos to be posted on YouTube or in any other online format due to releases and permission. Commercial recording equipment is not permitted.



# CHECK-OUT

APPLIES TO ALL CAMPERS

---

All camps end with the final performance. After the final performance, campers can meet up with their families and then return to the dorm where they will collect their belongings and check-out. Day campers may leave from the performance with their families.

If someone other than the parent(s) on the camp registration will be signing the camper out from camp, please make sure that the person taking the camper home is included in your online camp account as an Authorized Pick-Up. See Authorized Check-Out on [page 6](#) for more information.

Campers should make sure that their room is left clean and check to make sure they have all items before leaving. Room keys must be returned.

## LOST AND FOUND

We maintain a lost and found at the Help Desk and at the Dorm Office. Any items left or lost can be returned at the family's expense via the UPS store on campus. **Items not claimed by July 14 will be donated or discarded.** Call 850-644-9934 or email [musiccamps@fsu.edu](mailto:musiccamps@fsu.edu) for help with Lost and Found.

# AFTER CAMP

GET READY FOR SUMMER 2024!

---

The camp office will be open from July 10-14 from 9am-4pm. The office will be closed from July 17-August 18; during this time there will be no staff in the office, but email and voicemail will be checked on a limited basis. The office will return to a regular schedule on August 21<sup>st</sup> at 9:00am.

Information about Summer 2024 will be sent out in the fall. The anticipated start for Summer 2024 registration is January 8, 2024.

## CONCERT RECORDINGS

All campers will receive a free digital download AUDIO (NOT VIDEO) recording of their final performance.

Information about accessing the recording will be sent to families via email after camp has ended. **Recordings typically become available by September, but it is dependent upon on the recording company.**



# CONTACT



(850) 644- 9934

(448) 500-2503 (after hours during camp)



<https://music.fsu.edu/camp-festivals>



PO Box 3061180

Tallahassee, FL 323206-1180